

Figure 23A. Shock-metamorphosed basalt fragment, composed of fractured clinopyroxene with isotropic plagioclase laths (maskelynite). Fragment 315,53; plane polarized light; scale bar 0.1 mm.

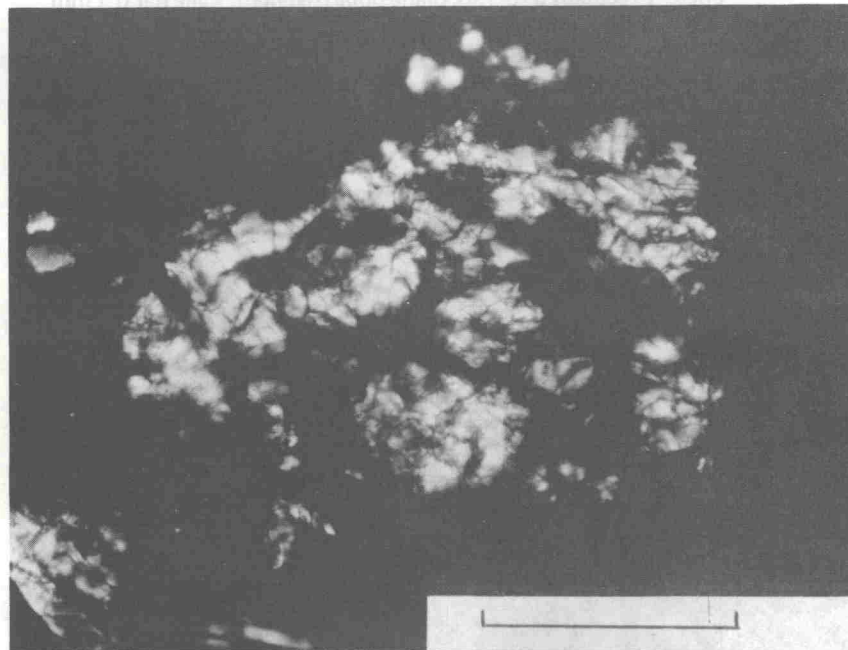


Figure 23B. Same view as Figure 23A; crossed polarizers. The pyroxene remains birefringent and lacks extremely mosaic extinction; plagioclase areas are dark and isotropic.

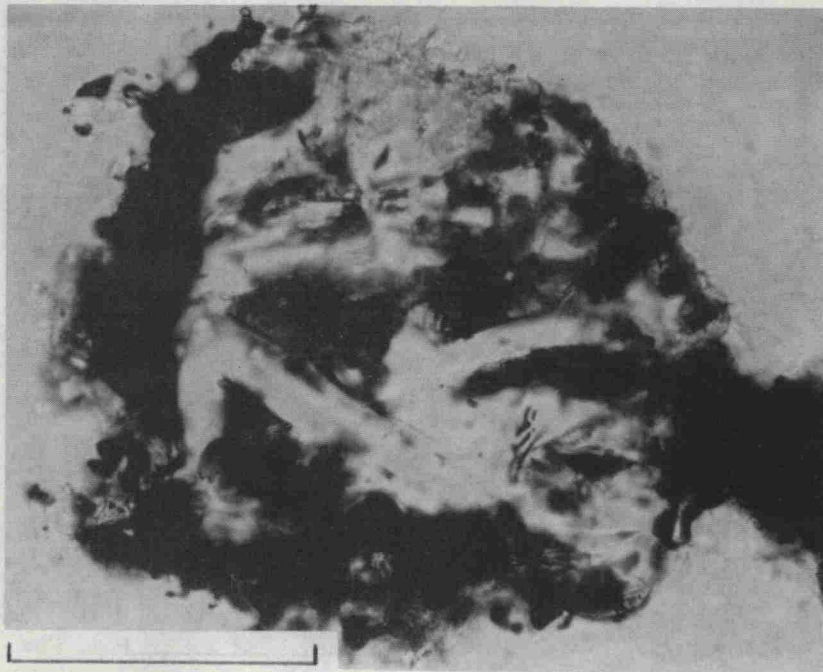


Figure 24A. Plagioclase-bearing shock-metamorphosed basalt fragment with adhering selvages of dark microbreccia material. The fragment is composed of isotropic plagioclase laths (maskelynite) with intergranular crystals of pyroxene that display fracturing and birefringence. Fragment 315,130; plane polarized light; scale bar 0.1 mm.

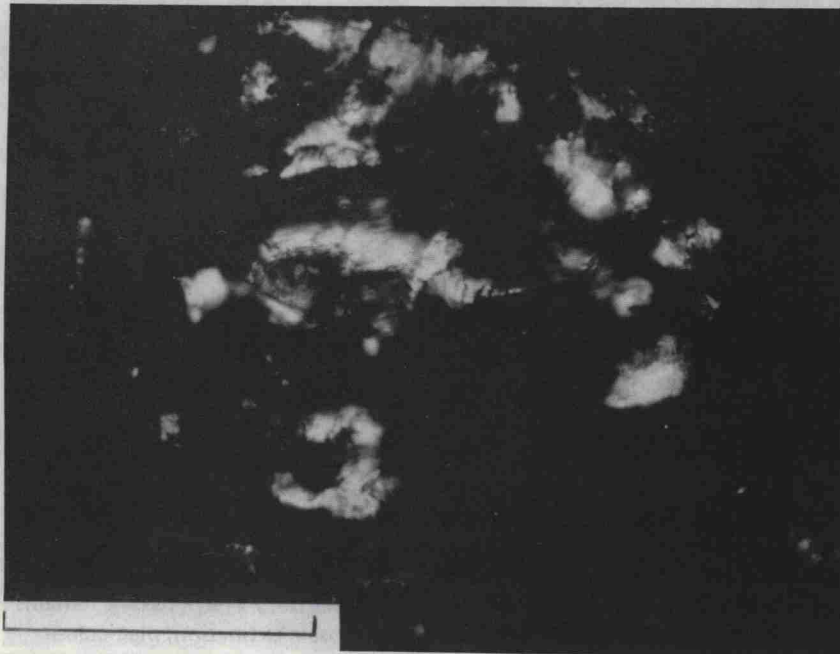


Figure 24B. Same view as Figure 24A; crossed polarizers. Pyroxene crystals show birefringence, while larger plagioclase laths are dark and isotropic.